

Specifications

Print process

Print method: desktop A4 laser beam printer
Print speed: 34 ppm (pagepro 4650EN), 43 ppm (pagepro 5650EN)
First page out: 10.5 seconds (pagepro 4650EN), 9.5 seconds (pagepro 5650EN)
Warm-up time: 20 seconds or less
Max. resolution: 1200 x 1200 dpi
Duty cycle per month: 150,000 pages (pagepro 4650EN), 200,000 pages (pagepro 5650EN)

Hardware and software capabilities

Processor type: 500 MHz
Memory: 128 MB standard, 384 MB maximum
Printer emulations: PostScript 3, PCL 6, XPS Direct Print⁷, PDF 1.6 Direct Print⁸, JPEG/TIFF Direct Print⁸
Direct print: PDF (version 1.6), JPEG, TIFF (Hard disk drive⁴ option or CF card³ required)
Printer management: PageScope[®] NetCare, PageScope[®] Web Connection, PageScope[®] Network setup, PageScope[®] Peer to Peer Printing Tool, PageScope[®] EMS plug-in, PageScope[®] Web Jet Admin plug-in, PageScope[®] Plug and Print, PageScope[®] NDPS Gateway, PageScope[®] Direct Print, Download manager and Status monitor.
CF card³: optional (256 MB, 512 MB, 1 GB, 2 GB, 4 GB)
Hard disk kit (HDD)⁴: optional

Fonts

137 standard PostScript[®] fonts, 93 PCL[®] scalable fonts, 51 symbol sets and 10 standard line printer fonts

Interface support

Ethernet 10Base-T / 100Base-TX / 1000Base-T (supports TCP/IP, EtherTalk[®], IPX/SPX, UDP, IPP1.1, SNMP, HTTP, HTTPS, IPv6) Bidirectional IEEE 1284 parallel, USB 2.0 (High-Speed) and USB Host Port (for PictBridge and Direct Print)

Operating system compatibility

Windows[®]: Vista™ (32/64-bit), Server 2003 (32/64-bit), XP (32/64-bit), 2000
Macintosh[®]: OS X 10.2+, OS X Intel 10.4+
Linux[®]: RedHat v9.0, SuSe v8.2
Netware[®]: Netware 4/5/6

Paper handling

Standard paper input: 550-sheet cassette and 150-sheet tray
Standard paper output: 500-sheet face-down output tray, 70-sheet face-up tray (optional for pagepro 4650EN)
Optional paper handling: 2 x 550-sheet A4 lower paper feeder, 500-sheet offset stacker, 70-sheet face-up tray (standard for pagepro 5650EN)
Media sizes supported: A4, A5, A6, B5, B5 (JIS), B6, letter, legal, 16K, Kai16, Kai32, J-Postcard, executive, Government letter/legal, folio, double postcard, statement, UK Quarto, foolscap, custom (76.2-215.9 mm x 127-355.6 mm) – up to 900 mm
Envelope sizes supported: Com10, C5, C6, DL, Monarch
Duplexer² sizes supported: A4
Printable area: 4.2 mm from all edges
Paper weights: Plain paper (pagepro 4650EN: 60-105 gsm) (pagepro 5650EN: 68-105 gsm), thick paper (106-216 gsm) and recycled paper (pagepro 4650EN: 60-105 gsm) (pagepro 5650EN: 68-105 gsm), Duplexing² (60-105 gsm)
Print media: Plain paper, thick paper, recycled paper, transparency, letterhead, envelope, labels, postcard and glossy paper

Physical

Dimensions: (D) 465 mm x (W) 422 mm x (H) 404 mm
Weight: 25 kg (engine without consumables), 28 kg (packaged to ship)

Regulatory/Safety conformity

UL, cUL, FCC-B, DOC, VCCI, CE Marking, C-Tick, CDRH, WEEE, RoHS



Electrical

Input voltage range: 220 V – 240 V (± 10 %)
Frequency: 50 – 60 Hz (± 3 Hz)
Power consumption: 1015 W or less
 Average during printing 598 W or less
 Standby 113 W or less
 Energy save 19 W or less (New Energy Star[®] compliant)

Environmental

Temperature: 5 °C – 35 °C (operating)
Humidity: 15 % to 85 % RH (operating)
Acoustic Noise (pagepro 4650EN): 53.6 dB or less (A) (operating), 27 dB or less (A) (standby)
Acoustic Noise (pagepro 5650EN): 56.1 dB or less (A) (operating), 28 dB or less (A) (standby)

Options

PagePro 4650EN Lower Feeder Unit (inc Cassette)	A0FG0Y1
PagePro 5650EN Lower Feeder Unit (inc Cassette)	A0FG0Y2
PagePro 4650EN Duplex Option	A0FH0Y1
PagePro 5650EN Duplex Option	A0FH0Y2
PagePro 4650EN/5650EN Offset Tray Option	A0FJ0Y1
PagePro 4650EN Face-up Tray Option	A0FK0Y1
PagePro 4650EN / 5650EN 256MB Memory Upgrade	9J05151
PagePro 4650EN / 5650EN HD Kit (40GB)	A08D0Y1
PagePro 4650EN / 5650EN CF Adaptor	A08D0Y2

Consumables⁶

PagePro 4650EN Toner Cartridge 10,000 pages (N/A in ANZ)	SEA	A0FN041
	India	A0FN021
PagePro 4650EN Toner Cartridge 18,000 pages	SEA & ANZ	A0FN042
	India	A0FN022
PagePro 5650EN Toner Cartridge 11,000 pages (N/A in ANZ)		A0FP041
PagePro 5650EN Toner Cartridge 19,000 pages		A0FP042

Pre-installed:

Black toner – yield up to 6,000 pages

Note:

PagePro 4650EN (excludes India)	A0DX041
PagePro 4650EN (India only)	A0DX021

Warranty period and conditions¹

1 year on-site warranty (within AP; local law applies)
 An optional increase of one or two years warranty, (total two or three years) is available.
 Extra One Year OnSite 2604650-600
 Extra Two Year OnSite 2604650-700

¹ For Singapore product warranty, please contact your reseller or Singapore Office

² Duplexer supports plain paper only.

³ CF card enables storing fonts/overlays, direct printing (PDF, TIFF and JPEG), Collating, Job Accounting, User/Department certification and optional offset finisher support. More than 1 GB CF card is required for Collating. Requires Compact Flash Card adapter. Cannot be installed at the same time as Hard Drive option.

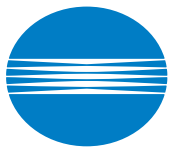
⁴ Optional hard disk kit or CF Card kit³ enables Secure printing, Proof-then-Print, Print & Hold, Job storing and XPS support.

⁵ The addition of some options, in some combinations may cause the product to become non-compliant. Establishment of new regulations may cause the product to become non-compliant. Energy Star compliance does not represent an EPA endorsement of any product or service.

⁶ The stated life expectancy of each consumable in the printer is based on printing under specific operating conditions such as page coverage for a particular page size (5 % coverage of A4). The actual consumables life will vary depending on the use and other printing variables including page coverage, page size, media type, continuous or intermittent printing, ambient temperature and humidity.

⁷ Requires optional Hard Drive

⁸ Requires optional Hard Drive or Compact Flash Card



KONICA MINOLTA

pagepro 4650 EN / 5650 EN

High Speed Network Mono

Basic Features

Speed

- Print speed A4 - 34 ppm (pagepro 4650EN), 43 ppm (pagepro 5650EN)
- First page out: 10.5 secs (pagepro 4650EN), 9.5 secs (pagepro 5650EN)
- Warm-up time: 20 secs or less
- Gigabit Ethernet

Graphic Power

- Resolution: Up to 1200 x 1200 dpi
- Printer emulations: PostScript[®] 3TM, XPS, PCL[®] 6 (XL3.0), PCL[®] 5 e/c

Operating System

- Windows[®] Vista™ (32/64-bit) / Server 2003 (32/64-bit) / XP (32/64-bit) / 2000, Mac[®] OS X 10.2+ / OS X Intel 10.4+, Linux[®], Novell[®]

Warranty¹

- 1-year on-site warranty



Australia
 Sales Free Call: 1800 265 687
 Tel: +61 2 9878 5333
 Fax: +61 2 8873 6653
 Email: sales@printer-konicaminolta.com

New Zealand
 Sales Free Call: 0800 490 061
 Tel: +64 9 918 0975
 Email: sales@printer-konicaminolta.com

Singapore
 Tel: +65 6735 8466
 Fax: +65 6735 8477
 Email: sales@printer-konicaminolta.com

Cambodia, India, Indonesia, Malaysia, Philippines, Sri Lanka, Thailand, Vietnam
 Above countries please contact your reseller or the Singapore office.

Technical Support Free Call:
 Australia: 1800 456 999
 India: +91 120 252 6518/19
 Indonesia: +62 21 420 3888
 Malaysia: +60 3 7958 5988
 New Zealand: 0800 443 687
 Philippines: +63 2 747 6888
 Singapore: 1800 735 4498
 Thailand: +66 2 235 0156
 Vietnam: +84 8 862 9855
 Email: support@printer-konicaminolta.com

Authorised Dealer

www.printer-konicaminolta.com





BETTER. FASTER. SMARTER.

Rock-solid reliability and high-powered performance come together in the fast pagepro™ 4650EN / 5650EN workgroup laser printer. Packed with a 500 MHz processor and optimized Emperon™ technology, the printer hits speeds of 34 ppm (pagepro™ 4650EN) / 43 ppm (pagepro™ 5650EN)—first pages out in as fast as 10.5 secs (pagepro™ 4650EN) / 9.5 secs (pagepro™ 5650EN). All varieties of approved paper, including envelopes and special media, can be used. A multiprotocol Gigabit Ethernet interface and suite of management tools make network integration easy. PC, Mac and Linux users are well supported. For fast-paced companies, the pagepro 4650EN / 5650EN is THE choice to keep business on track.

RELIABILITY THROUGHOUT

In it for the long haul. Outstanding reliability is a critical element of a workgroup resource and the pagepro 4650EN / 5650EN rises to the challenge. Quality is evident throughout the printer's design. Proven laser technology provides dependable service and long-lasting printed documents. And the well-constructed pagepro 5650EN engine supports an impressive duty cycle of 200,000 pages per month with low operational costs for years of valuable service.

PERFORMANCE DRIVEN

Fast and Productive. The combination of Emperon technology, an advanced 500 MHz processor, and performance-based engine keeps print jobs moving efficiently. Expect first pages in as fast as 10.5 secs (pagepro™ 4650EN) / 9.5 secs (pagepro™ 5650EN). Entire jobs run up to 34 ppm (pagepro 4650EN) / 43 ppm (pagepro 5650EN). The pagepro 4650EN / 5650EN comes standard with 128 MB RAM that can be expanded to 384 MB RAM. Advanced functions, such as direct print and secure print services, are supported by an optional 40 GB hard drive⁴.

MORE PAPER OPTIONS

Versatile media support. The pagepro 4650EN / 5650EN offers great output quality and loads of paper handling options. Text is sharp and graphics are beautifully detailed. Great-looking documents come in all varieties. Select thick or thin paper, recycled or new, labels, envelopes, and even transparencies. In fact, use different stocks in each of the printer's two paper trays.

Documents delivered your way. Save time restocking the printer by adding optional trays and more than double the capacity to 1,800 sheets. The print driver offers settings for collation, booklets and n-up printing. A 500-sheet stacker/sorter unit is available to keep multiple documents in neat order. For paper conservation, use the optional duplex unit² and cut paper use in half.

NETWORK READY

Workteam ready. The pagepro 4650EN / 5650EN contains an embedded Gigabit Ethernet interface to handle all varieties of computers and applications and multiple protocols—including TCP/IP v6, IPsec and SSL—for the latest in network and security standards. Integration is seamless. A comprehensive suite of PageScope utilities make network installation and printer management fast and easy.

PAPER OPTIONS ADD VERSATILITY. MINIMIZE TRIPS TO FILL THE PRINTER BY ADDING PAPER TRAYS. HANDY OFFSET STACKER/SORTER ORGANIZES PRINT JOBS.



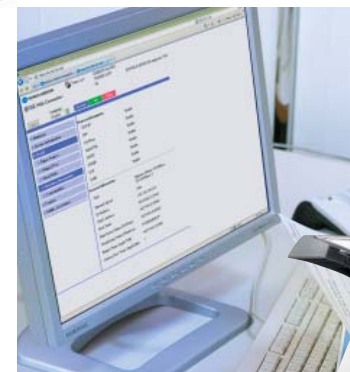
FRONT PANEL IS YOUR INFOLINE. AT-A-GLANCE, DETERMINE TONER LEVELS, PRINT JOB STATUS, AND OFFLINE CONDITIONS. THE INFOLINE-STYLE DISPLAY PROVIDES A VISUAL INDICATION—UP CLOSE AND FROM A DISTANCE—THE STATUS OF THE PRINTER.



DIRECT PRINT QUICK. SEND PDF, XPS, JPEG AND TIFF FILES DIRECTLY TO THE PRINTER USING A USB FLASH DRIVE, PAGESCOPE WEB CONNECTION OR PAGESCOPE DIRECT PRINT UTILITY. ITS FAST AND CONVENIENT.

pagepro 4650EN / 5650EN

POWERFUL PAGESCOPE™ SOFTWARE. PAGESCOPE WEB CONNECTION FOR WEB-BASED DEVICE MANAGEMENT, PAGESCOPE NET CARE FOR REMOTE CONFIGURATION OF MIBCOMPLIANT PRINTERS, DESKTOP STATUS MONITOR FOR PRINT STATUS REVIEW AND ERROR ALERTS.



VERSATILE OPTIONS

- 1 150-sheet multipurpose cassette supports media up to 8.5" x 35.4".
 - 2 550-sheet cassette eliminates frequent paper replenishing.
 - 3 70-sheet face-up output tray (standard for pagepro 5650EN; optional for pagepro 4650EN) for thick stocks and special projects.
 - 4 550-sheet cassettes (optional) add up to two for 1,800-sheet max paper input.
 - 5 500-sheet stacker/sorter (optional) keeps multi-page collated documents in order.
- Also Available
 ▶ Automatic duplexer² for convenient, two-sided printing

FEATURES, OPTIONS & BENEFITS

Supports mixed computing networks. The pagepro 4650EN / 5650EN handles the diverse range of today's computing environments—PCs, Macs, and Linux—with support for TCP/IP, EtherTalk, NetWare, and NetBEUI protocols and PostScript 3, PCL 6, XPS, and PDF page description languages.

Papers for your business ventures. Business documents come in all sizes. Postcards to legal-size, and even banner paper, can be used safely in the printer. Other media can be used too. Try letterhead, cardstock, and other approved paper types to give projects a custom look.

Direct print options. Conveniently located, the USB 1.1 Host Port enables direct printing of PDF, XPS, JPEG, and TIFF files from a USB flash drive. No computer or additional software required. Or drag and drop files for print using your desktop PageScope Direct Print utility.

Advanced print functions. The printer's powerful 40 GB hard disk⁴ (optional) is used to store fonts and forms; retains jobs for easy reprinting; provides secure printing with a 4-digit PIN verification; assists with collation jobs; enables direct print functionality; and holds proof copy for review before printing. An optional Compact Flash Card also supports many of these advanced functions.

Office-friendly design. The pagepro 4650EN / 5650EN features modest proportions and quiet operation—even when duplexing²—to fit nicely into any professional environment. The front keypad is easy to read and clearly communicates helpful messages. Printer readiness is shown by the innovative InfoLine-style feature.

Simple setup and operation. The pagepro 4650EN / 5650EN is easy to use and maintain. A single all-in-one toner cartridge is the only consumable. The printer driver is simple to install and understand. Intelligent PageScope network utilities are provided for advanced administration.

Professional quality. 1200 x 1200 dpi resolution brings crisp black text, fine lines, and clear details to your documents. Graphics are rendered in rich shades, from the lightest gray to the deepest black.

34 PPM
pagepro
4650EN

43 PPM
pagepro
5650EN